

# Introduction

From the Headteacher, Nigel Willingham

It is my privilege to introduce the St Clement's High School prospectus. I trust it will help you gain an insight into a school which has a strong focus on academic achievement and progress within a caring, small school environment.

St Clement's is a friendly school at the heart of its community. Teachers pride themselves in knowing the students as individuals and visitors frequently comment on the friendly, ordered atmosphere and the politeness of our students.

St Clement's High School works within the West Norfolk Academies Trust. This means our students benefit from working in a close, mutually beneficial partnership with Springwood High School, Marshland High School and Smithdon High School. The Trust has a clear, strategic vision for the future, based on four key areas;

- World class standards of student achievement
- Strong community engagement
- Excellent standards of Teaching and Learning
- World class resources for our school community.

Our school was inspected by Ofsted in 2017 and we were proud to be judged as Good in all areas.

***Pupils commented that 'The best thing about this school is the staff; they make the school what it is.'***  
***Ofsted 2017***



**ST CLEMENT'S  
HIGH SCHOOL**



**West Norfolk  
Academies Trust**

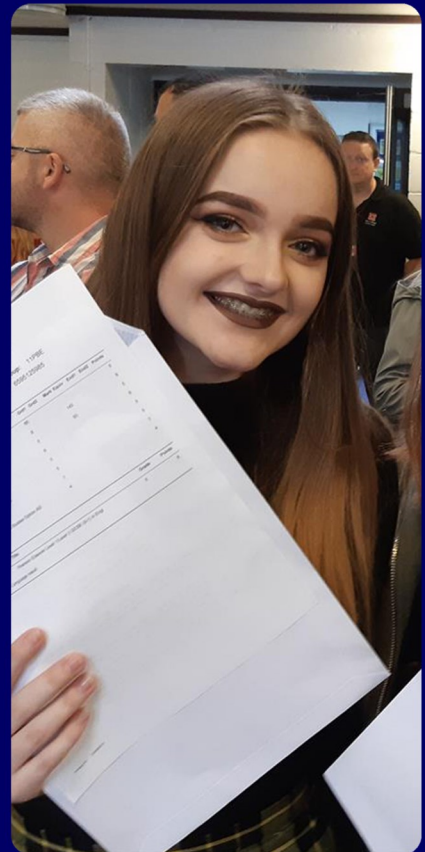


# Student Achievement

St Clement's High School has a strong focus on student achievement and progress. We want every student to have the best life chances possible and know that this starts with a great set of qualifications.

In the summer of 2018 61% of our students achieved a grade four or above in English and 41% achieved a grade 4 or above in Maths. Each year group joins us from a different starting point and this year's results represent good progress for this student cohort. The progress scores for 2018 have not yet been published but we expect to be ranked among the highest in West Norfolk. The school will continue to work relentlessly to ensure we challenge and support our students in achieving their very best year on year. We have high expectations of both our teachers and our students. We set challenging targets for all students and support each other to achieve them. We work hard to accurately monitor the progress of our students, celebrate their progress and provide intervention where necessary.

A positive attitude to learning is an essential part of academic success. Our teachers regularly assess each student's level of engagement using an attitude to learning score. We celebrate students who have a good attitude to their studies and actively encourage those who need to improve their approach.



**ST CLEMENT'S**  
HIGH SCHOOL



West Norfolk  
Academies Trust



# Pastoral Support

***"Pupils enjoy the atmosphere of the small, caring community. Diversity is welcomed and embraced in the school." Ofsted 2017***

St Clement's is a small and caring school where we aim to get to know each child as an individual. Every student is placed in a year based tutor group and they meet with their tutor each morning. Both the upper school and the lower school have their own Pastoral Support Officer based in the centre of the school. The PSOs are available to help students with any issues that might arise during the day and parents can also contact them directly with any queries or concerns they may have. This year we have added a Student Welfare Manager to our pastoral team, to help ensure our students are getting the support they need to be happy, healthy and successful in school.

***"The school is a welcoming and vibrant place, where happy pupils are developing into caring young adults." Ofsted 2017***

The relationship between home and school is really important to us and to aid good communication all teachers are available by appointment every Thursday after school to meet with parents. This means any concerns can be quickly addressed. Support for homework can be found at the homework club which runs every day until 4.30 in the Library.

***"The support for pupils who arrive in Year 7 is a strength of the school. The efforts that staff make to induct and support new pupils is highly regarded by many parents." Ofsted 2017***

Students are encouraged to play an active role in running the school. The Student Council is a great way for students to share their views and help develop their school. The lower school Council felt the student toilets needed updating; they gathered evidence, presented their case and secured funding of 75K from the West Norfolk Academies Trust for a complete refurbishment, demonstrating the value of getting involved in our student voice opportunities.



**ST CLEMENT'S  
HIGH SCHOOL**



**West Norfolk  
Academies Trust**



# Teaching & Learning

***“Pupils feel that staff are vigilant and dedicated to helping them. Pupils said that staff ‘go the extra mile’ to support their academic and personal needs.” Ofsted 2017***

St Clement's High School has a great team of staff who work closely together to ensure the highest quality of teaching and learning. They work hard to ensure that students make progress in every lesson. In the lower school students are taught in ability groups to ensure work is accessible but challenging. Students are then guided through the options process at the end of Year 8 and begin their chosen GCSE courses at the beginning of Year 9.

***“The curriculum offers pupils breadth in their experiences. Leaders ensure that pupils' needs and aspirations come first when deciding on their provision” Ofsted 2017***

While we are a small school we offer a broad range of GCSE and equivalent courses alongside the core subjects of English, Maths and Science, including...

- Geography
- History
- Religious Education
- Citizenship
- Music
- Drama
- Design and Technology
- Hospitality and Catering
- Business Studies
- Retail Business
- French
- Physical Education
- Information Communication Technology
- Fine Art
- Photography

The majority of students will study Combined science, while the top scientists in each year take Triple Science and gain specific GCSEs in Biology, Chemistry and Physics.



**ST CLEMENT'S  
HIGH SCHOOL**



**West Norfolk  
Academies Trust**



# Extra-Curricular Opportunities

Although academic progress is at the core of a successful education it is also vital that every student is engaged in the other areas of school life. In addition to all our sporting opportunities St Clement's High School offers a full range of extra-curricular activities.

Each term the timetable is suspended for a day and we hold a Super Learning Day. External speakers visit the school to run sessions on topics such as first aid, while other year groups may use the opportunity to visit a national attraction. Harry Potter World has proved very popular in recent years!

Those students with a particular interest in Science and Technology may take the opportunity to become involved in the Technology Tournament, or demonstrate their scientific knowledge at such events as the British Aerospace Science Roadshow.

At St Clement's we believe school trips provide a great opportunity for active learning and foreign residential trips can be a great way to broaden students' horizons. Bi-annual ski trips to Austria have been a popular feature of our calendar for many years. The Creative Arts trip to New York has become a regular event and in 2019 our students are visiting Japan. These longer trips sit alongside our annual History and Language visits to France and Germany. Each year we have groups visiting the Houses of Parliament, West End theatres and national galleries.

Students with a musical interest may take up piano, guitar or drum lessons. A range of seasonal clubs such as the popular Christmas Cake Club occur throughout the school year.

For the more adventurous students the Duke of Edinburgh scheme provides an opportunity for them to pit their wits against the elements and prove they can rise to any challenge.



**ST CLEMENT'S**  
**HIGH SCHOOL**



**West Norfolk**  
**Academies Trust**



# Creative Arts

The Arts are recognised as a strength of the school and we are keen for students to foster their creative talents. In order to recognise achievement in this area and develop further we are currently working towards gaining the Artsmark award.

We are fortunate to have a well-equipped Drama studio with a sprung floor. The teaching in this area has been recognised as outstanding and the GCSE course is extremely popular. Several students have recently progressed to study at some of the country's leading Drama schools. 2019 will see our third entry into the National Theatre Connections programme.

Each year we hold an exhibition of Art and Photography to showcase the final pieces from the GCSE courses and display the work of the younger year groups. Students enjoy the freedom to work on large scale pieces and work in the fully equipped photography studio and dark room. The grades achieved in Art and Photography at GCSE have long been recognised as outstanding and a visit to our permanent gallery space is often a highlight of school tours.

We strive to give all pupils an exciting and relevant experience both inside and outside of the classroom. To become confident with their skills and ideas, enabling them to take ownership of their work and progression and ultimately to fall in love with the aesthetics of the visual world.

Together Music, Design and Technology, Drama, Art and Photography form the Creative Arts Faculty with the aim of developing our students' self-expression and creative skill.



Visual Perception  
An Exhibition of Art & Photography



ST CLEMENT'S  
HIGH SCHOOL



West Norfolk  
Academies Trust



# Sport

Physical education plays a major role in the life of our school and all students have the opportunity to take part in competitive sport through our House Match and extensive extra-curricular programme. Alongside the more traditional sports students can also participate in activities such as archery. Started at the request of students and developed with support from parents we even have a successful fishing team. Students often have the chance to watch elite level sporting events such as basketball, rugby & netball and visit sporting establishments like Loughborough University.

Students have the opportunity to gain half and then full Sporting Colours by representing the school in a range of sports. The achievement of full Sporting Colours is recognised with the presentation of a Sports Tie, a much sought after accolade, worn with great pride.

Students complete the Sports leader award during Year 10. This requires them to organise and run an annual sports festival for children from our local primary schools. Each year the event has grown and most recently saw over 300 primary students taking part. This has become a key event on all the participating schools' calendars and is much loved by those involved.

Each year the PE team host a special presentation evening to recognise the sporting achievements of our students. New school records are celebrated and personal bests acknowledged, along with the achievements of the many school teams run during the year. Over the last eight years many accomplished sports personalities have delivered inspiring speeches and helped to motivate the next generation of St Clement's sports men and women.



**ST CLEMENT'S**  
HIGH SCHOOL



West Norfolk  
Academies Trust



ST CLEMENT'S STUDENTS ARE...

**P**roactive

**R**espectful

**I**ndependent

**D**etermined

**E**nthusiastic



**ST CLEMENT'S**  
HIGH SCHOOL



West Norfolk  
Academies Trust